

## Strut / Channel Nut

**Thread Type:** Metric - Coarse

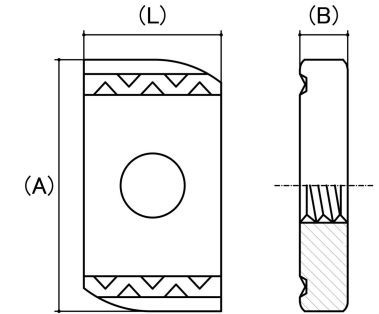
**Thread Direction:** Right Hand

**Material:** Carbon Steel

**Class Grade:** Low Tensile Class 4.6

**Finish:** Galvanised

**Corrosion Protection Level:** Excellent



*Cad Drawings shown for graphic representation only.\**

Size	Thread Pitch (mm)	Thread Type	Overall Nut Height (B) (mm)		Nut Length (L) (mm)		Nut Width (A) (mm)		Spring length (S) (mm)	sku (Part Number)
			Min	Max	Min	Max	Min	Max	Nom	
M6	1.00mm	Coarse	7.90	8.10	18.00	20.00	34.00	34.60	No Spring	41SN6G
M6	1.00mm	Coarse	7.90	8.10	18.00	20.00	34.00	34.60	20.000	41SN6SG
M8	1.25mm	Coarse	7.90	8.10	18.00	20.00	34.00	34.60	No Spring	41SN8G
M8	1.25mm	Coarse	7.90	8.10	18.00	20.00	34.00	34.60	20.000	41SN8SG
M10	1.50mm	Coarse	9.10	9.30	18.00	20.00	34.00	34.60	No Spring	41SN10G
M10	1.50mm	Coarse	9.10	9.30	18.00	20.00	34.00	34.60	20.000	41SN10SG
M12	1.75mm	Coarse	11.70	11.90	18.00	20.00	34.00	34.60	No Spring	41SN12G
M12	1.75mm	Coarse	11.70	11.90	18.00	20.00	34.00	34.60	20.000	41SN12SG
M16	2.00mm	Coarse	10.70	11.40	28.00	30.00	34.00	34.60	No Spring	41SN16G
M16	2.00mm	Coarse	10.70	11.40	28.00	30.00	34.00	34.60	20.000	41SN16SG

**Disclaimer:**

Dimensional data and technical information was obtained from publically available sources and not acquired through standard agencies. It has been completed and compiled for reference purposes only; where discrepancies are found they are subject to change without notice. Bolt & Nut Australia makes no warranties or representations regarding the accuracy and validity of the compiled information and data. Contact the relevant standard authorities for accurate and detailed information.

\* Cad Drawings may not reflect diameter, thread length or overall length.

© Bolt & Nut Australia Pty Ltd. All rights reserved.

Version: 25 Aug 2024